



MONTHLY MEMBERSHIP PROGRESS REPORT

District 11 A2

Results as of: 06/30/2018

GMT: STEVE ANTON

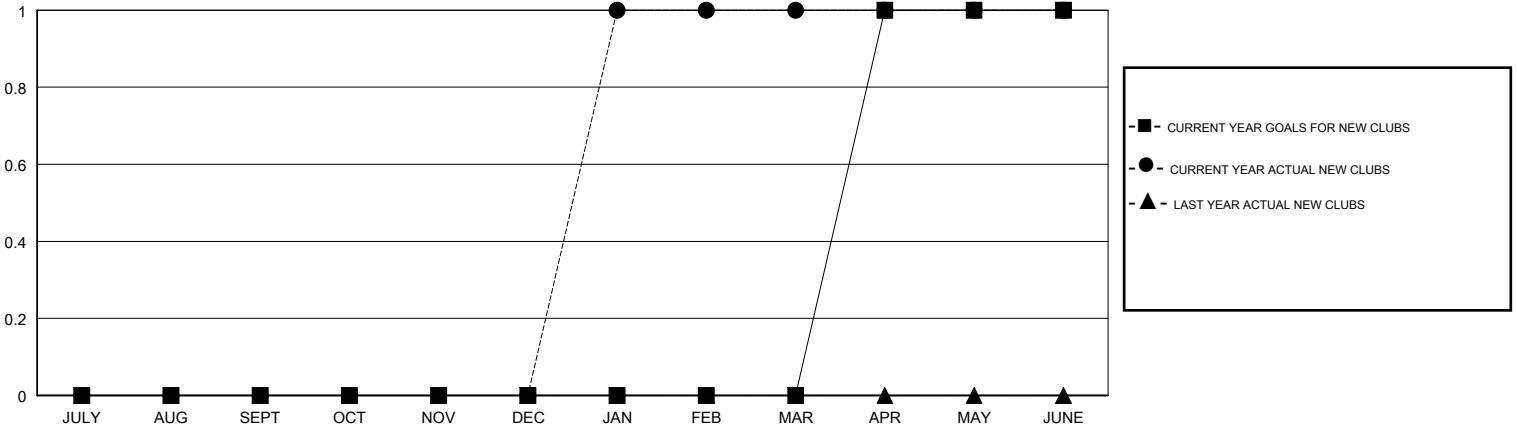
LOCATION MICHIGAN

GMT CA

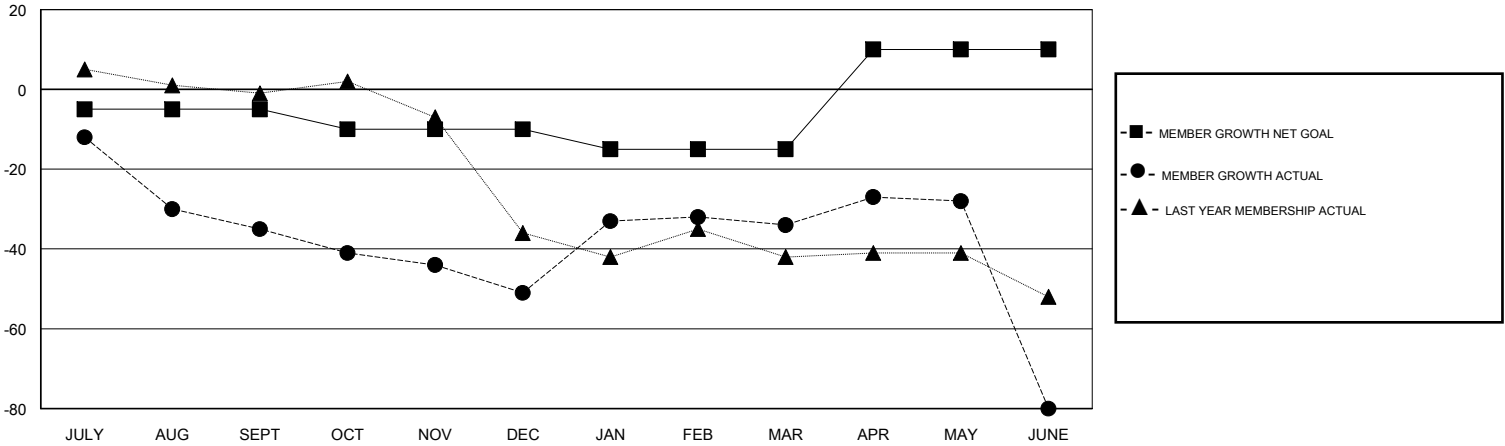
Clubs			
RESULTS FOR 2017-2018			
QUARTER	NEW CLUB GOAL	NEW CLUBS	DROPPED CLUBS
JULY/AUG/SEPT	0	0	0
OCT/NOV/DEC	0	0	0
JAN/FEB/MAR	0	1	0
APR/MAY/JUNE	1	0	1

Members			
RESULTS FOR 2017-2018			
QUARTER	MEMBER GROWTH NET GOAL	MEMBER GROWTH ACTUAL	DROPPED MEMBERS ACTUAL (including transfers)
JULY/AUG/SEPT	-5	14	42
OCT/NOV/DEC	-5	20	30
JAN/FEB/MAR	-5	60	36
APR/MAY/JUNE	25	44	82

GOALS AND ACTUAL NEW CLUBS CUMULATIVE



GOALS AND ACTUAL MEMBERS CUMULATIVE



DROPPED CLUBS: 1

27 CLUBS OF 42 ADDED 1 OR MORE NEW MEMBERS

GENDER DISTRIBUTION	
MALE	974 (70.99%)
FEMALE	398 (29.01%)
Women Percentage Fiscal Year Goal: 30%	

DROPPED MEMBERS	
DECEASED	23
CLUB CANCELLED	12
OTHER	155
TOTAL	190

[CLICK HERE FOR CUMULATIVE MEMBERSHIP DATA](#)

TOTAL FAMILY UNIT MEMBERS	0
FAMILY MEMBERS PAYING HALF DUES	0